

# Northern Metropolitan Cricket Association Incorporated

(Inaugurated 1922)

A.I.N: A0002386W

A.B.N: 41 787 143 214

**NMCA Phone:** 0448 513 689

**Email:** [nmca.generalmanager@gmail.com](mailto:nmca.generalmanager@gmail.com)

**Web:** <http://nmca.com.au>



## Women's Playing By-Laws

2019-2020

# SECTION 5 – WOMEN’S PLAYING BY-LAWS

## INDEX

### Policies

	Clause	Page
Blood Rule		2
Code of Conduct - Victorian Metropolitan Cricket Union INC		3
Harassment and Discrimination Policy – NMCA		4
Spirit of Cricket		5
Sun Smart Policy – VICHEALTH		6

### Senior Playing By-Laws

Balls	5.1	7
Cricket Attire	5.2	7
Disputes/Protests Arising From A Match	5.3	7
Grounds/Pitches	5.4	8
Match Points	5.5	8
Match Results	5.6	8
No Ball Call	5.7	9
Scheduled Match Times	5.8	9
Scorebooks / Scorers	5.9	9
Suspensions, Citings and Reports	5.10	9
Team Sheets	5.11	9
Walkovers	5.12	9
Weather Conditions	5.13	10
Women’s Competition – 20/20 Competition	5.14	11
Women’s Competition – 30/30 Competition	5.15	12
Women’s Competition – 10/10 Competition	5.16	13
Women’s Competition – Final Series Qualification Requirements	5.17	14
Women’s Competition – Final Series Formats	5.18	14
Women’s Competition – Marquee Player	5.19	14

### Appendices

Appendix A: Grounds	15
Appendix B: Crease Markings	16

## SECTION 5 – WOMEN’S PLAYING BY-LAWS

### BLOOD RULE

- (a) Each team shall have in their possession a properly stocked first aid kit.
- (b) Where a player during the course of a game, suffers any injury which causes bleeding, then the umpire - or in his absence - the captain or team manager, must retire the player from the game until such time as First Aid has been administered to prevent further bleeding.
- (c) The player cannot resume playing until the bleeding has stopped or the wound has been securely covered.
- (d) Any clothing stained with blood must be replaced with clean regulation clothing before the player can resume.
- (e) A batter who is injured and has temporarily retired as above and who is unable to return after the fall of the ninth wicket, shall be deemed to be "Retired Hurt" and the innings of the batting side shall be deemed closed.
- (f) A maximum of 10 minutes shall be allowed for the batter to receive First Aid and resume playing.
- (g) Where an injury occurs to a batter involved in the tenth wicket partnership a maximum of 10 minutes shall be allowed in order for the batter to receive First Aid and resume playing. If the batter is unable to continue within the 10 minutes then he shall be deemed "Retired Hurt" and the innings shall be closed.

Where the injury occurs within 10 minutes of the scheduled tea break, tea shall be taken immediately with no extra time being added. If the batter is unable to continue after the tea interval he shall be deemed "Retired Hurt".

- (h) There shall be no reduction in the number of overs to be bowled when time is lost due to blood rule.
- (i) Where an umpire is injured, sub-clauses (b), (c) and (d) shall apply. If the umpire cannot resume his duties the batting side shall supply an umpire until such time as the umpire is able to resume.
- (j) Clubs are required to have clearly displayed in their clubrooms emergency phone numbers for ambulance; doctor/clinic; nearest hospital.

## **CODE OF CONDUCT - VICTORIAN METROPOLITAN CRICKET UNION INC.**

- (a)** All matches shall be conducted in the true spirit of the game of cricket and club officials, team managers, coaches, captains and players are required to adopt this policy.
- (b)** No player shall, during the match, whether on or off the field of play, engage in conduct unbecoming to the game of cricket.
- (c)** Players shall respect the Umpire not verbally or physically abuse any Umpire not dispute the Umpires decision nor react in a threatening or disapproving manner when given out, move immediately from the field and not indulge in tantrums generally assist the Umpire in carrying out his duties not indulge in "sledging" opposition players not verbally or physically abuse opposition players or officials.
- (d)** Clubs shall place all teams (open and under age) under the control of a responsible person.
- (e)** Captains shall;
  - Instruct players to avoid wasting time - incoming and outgoing batters should pass inside the boundary line and fieldsmen should move quickly to position; and
  - Brief players on the behaviour requirements and request that his players conduct themselves in a manner that conforms to the traditional image of the game of cricket.
- (f)** No alcohol shall be consumed by any players, on or off the ground during any match.
- (g)** Players shall maintain a standard of dress consistent with that required by Association Rules.
- (h)** No player, official or supporter of a member club of the Association shall speak to or at or about any person of any member club of the Association in a manner which abuses, threatens, disparages, vilifies or insults the other person on the basis of that person's race, gender, religion, physical characteristics, colour, decent, national or ethnic origin or any other personal characteristic.
- (i)** Should any breach of this code occur or any action deemed to be detrimental to the game of cricket take place, the matter shall be reported to the Association in accordance with Association Rules and action taken by the Board as deemed necessary.
- (j)** Captains or a Club Official are responsible for seeking the Umpire(s) out at the completion of a day's play to obtain the 'all clear' and/or sign off on reports.

## **HARASSMENT AND DISCRIMINATION POLICY - NMCA**

The Northern Metropolitan Cricket Association is strongly committed to the health, safety and well-being of all its members and participants and is dedicated to providing an environment free of Harassment and Discrimination. Clubs and players are advised to read the **Member Protection Policy** on the VMCU website.

- (a) Harassment is any behaviour by a person or organisation which is offensive, abusive, belittling or threatening and which is directed at a person or group of people because of a particular characteristic of that person or group of people. The behaviour must be unwelcome and the sort of behaviour a reasonable person would recognise as being unwelcome and likely to cause the recipient to feel offended, humiliated or intimidated. Whether or not the behaviour is Harassment is to be determined from the point of view of the person receiving the Harassment.
- (b) **Harassment includes:**
- (i) Sexual Harassment.
  - (ii) Racial Harassment.
  - (iii) Sexuality Harassment.
  - (iv) Disability Harassment.
  - (v) Abuse.
  - (vi) Vilification.
  - (vii) Discrimination.
- (c) **Sexual Harassment includes:**
- (i) An unwelcome sexual advance; or
  - (ii) An unwelcome request for sexual favours; or
  - (iii) Unwelcome conduct of a sexual nature (including a statement, orally or in writing, of a sexual nature).
- (d) Racial Harassment includes harassment based on colour, descent, national or ethnic origin, cultural activity and sometime religion.
- (e) Disability Harassment includes harassment based on physical, mental or psychological disability or harassment of an associate or aide of a person with a disability.
- (f) Some forms of Abuse may constitute a criminal offence, for example assault and child abuse. If you believe that a criminal offence may have been committed you should seek legal advice and/or notify the police.
- (g) Vilification involves a person inciting hatred towards, serious contempt for, or severe ridicule of, a person or group of persons by public act. Public acts that may amount to vilification include any form of communication to the public and any conduct observable by the public.
- (h) Discrimination is treating or proposing to treat a person less favourably than someone else in certain areas of public life on the basis of an attribute or personal characteristic they have.

**PLEASE NOTE:**

**THIS IS AN EXTRACT OF THE POLICY. CONTACT THE ASSOCIATION TO VIEW THE COMPLETE POLICY**

## **SPIRIT OF CRICKET**

The Spirit of Cricket: Cricket is a game that owes much of its unique appeal to the fact that it is expected to be played not only within its Laws, but also within the Spirit of the Game.

Any action, which is seen to abuse this spirit, causes injury to the game itself. The major responsibility for ensuring the spirit of fair play rests with the Captains.

- (a) There are two Laws, which place the responsibility for the team's conduct firmly on the Captain.

**Responsibility of Captains:**

The Captains are responsible at all times for ensuring that play is conducted within the Spirit of the Game as well as within the Laws.

- (b) **Players' Conduct:**

In the event of any Player failing to comply with the instructions of an Umpire, criticising his decisions by word or action, or showing dissent, or generally behaving in a manner which might bring the game into disrepute, the Umpire concerned shall in the first place report the matter to the other Umpire and to the Player's Captain requesting the latter to take action.

- (c) **Fair and Unfair Play:**

According to the Laws the Umpires are the sole judges of Fair and Unfair Play. The Umpires may intervene at any time and it is the responsibility of the Captain to take action where required.

- (d) **The Umpires are authorised to intervene in cases of:**

- (i) Time Wasting.
- (ii) Damaging the pitch.
- (iii) Intimidatory bowling.
- (iv) Tampering with the Ball.
- (v) Any other action that they feel to be unfair.

- (e) **The Spirit of the Game involves RESPECT for:**

- (i) Your opponents.
- (ii) Your own captain and team.
- (iii) The role of the Umpires.
- (iv) The game's traditional values.

- (f) **It is against the Spirit of the Game:**

- (i) To question an Umpire's decision by word or gesture.
- (ii) To direct abusive language towards an opponent or Umpire.
- (iii) Indulge in cheating or any sharp practice, e.g.
  - i. Appeal, knowing that the Batter is not out,
  - ii. Advance towards an Umpire in an aggressive manner when appealing,
  - iii. Seek to distract an opponent either verbally or by harassment with persistent clapping or unnecessary noise under the guise of enthusiasm and motivation of one's own side.

- (g) **Violence:**

There is no place for any act of violence on the field of play.

- (h) Players, Captains and Umpires together set the tone for the conduct a cricket match and every player is expected to make an important contribution to this.

**PLEASE NOTE:**

**"Spirit of Cricket" means the philosophy developed by the Marylebone Cricket Club and adopted by cricket associations throughout the world which recognizes that the game should be played in accordance with its traditional "spirit" as well as within its laws.**

## **SUN SMART POLICY - VICHEALTH**

- (a)** Seek shade between 11 a.m. and 3 p.m. when possible.
- (b)** Play with long sleeve shirt.
- (c)** Wear a cricket club hat in preference to a cap.
- (d)** Clubs must have ample sun screen 30+ accessible to all players.
- (e)** Use Zinc cream to protect sensitive areas - nose, top of ears, lips.
- (f)** Women's Grades are not permitted to play once the temperature exceeds 36C.
- (g)** Where there is inadequate shelter from the sun (e.g. trees, buildings, etc.). Clubs are required to make an effort to provide alternative shade areas.
- (h)** Make adequate provision for extra drink breaks on days over 30C.
- (i)** Ensure that sun screen is re-applied at all available breaks.
- (j)** Wear 'sun smart' colours.
- (k)** Wear appropriate sunglasses where possible.
- (l)** Clubs should provide educational sessions, which shall increase awareness of skin cancer.

These By-Laws are made under the Board's Regulation making power in the Rules and contain various directions and requirements of the Association which are, where the context so indicates, mandatory, but which are not of a general nature which justifies inclusion in the main body of the Rules. These and By-Laws are subject to the Rules.

Definitions and interpretation of these By-Laws shall be in accordance with the Rules.

## **5.1 BALLS**

- 5.1.1 Matches shall commence with two (2) new 142 gram two-piece Association approved balls, supplied by the Association.
- 5.1.2 The Captains must produce the new ball and an appropriate spare ball at the toss of the coin that meet with the umpire's approval.
- 5.1.3 Clubs not providing or refusing to supply the match ball and spare ball to the umpires as required, shall be penalised as per the Penalties/Fines Schedule.
- 5.1.4 The General Manager, at the completion of the round of matches, is to be notified by a Club, in writing, that the opposing team did not use an association approved ball. The General Manager will then advise the participating clubs on the awarding of the match points.
- 5.1.5 The General Manager is to be advised of all circumstances relating to the non-start of the match and the points and match shall be awarded at the next Operations group meeting.

## **5.2 CRICKET ATTIRE**

- 5.2.1 The playing members of all Clubs must be properly dressed in cricket attire.
- 5.2.2 Cricket attire for players and substitutes shall be defined as:
  - 5.2.2.1 White trousers (shorts are not permitted),
  - 5.2.2.2 Association approved two tier Club coloured shirts with sleeves, collar and an approved association Logo, players must wear full length white cricket pants or approved coloured pants. However, all players must wear the same coloured clothing.
  - 5.2.2.3 White sweater, or approved Club coloured sweater,
  - 5.2.2.4 Recognised cricket footwear or predominately white runners without spikes,
  - 5.2.2.5 Recognised cricket cap or white hat. (Baseball style caps must be in Club colours and carry club logo).
- 5.2.3 Sweat and headbands are to be skin toned only. White sweaters with club colours on neck, waist or wrist may be worn.
- 5.2.4 Clubs wishing to add another colour to their white shirts (edging/piping on sleeves/collar/panels), must obtain the approval of the General Manager.
- 5.2.5 In the event of any player not conforming to this rule, the player shall be asked to leave the playing field and shall take no further part in the game until his attire meets the standard and shall be fined as per the Penalties/Fines Schedule.
- 5.2.6 Any player persistently refusing to appear in proper cricket attire shall be dealt with as determined by the General Manager.
- 5.2.7 Club logos must be cleared by the General Manager and should appear on the left front of shirt.
- 5.2.8 Sponsors logos may be placed on either or both shirt sleeves, back of shirts and trouser pockets and shall not exceed the following dimensions:-
  - 5.2.8.1 Shirt Sleeve is to be no more than 10cm long, 5cm high and no lower than 7cm from the top of the sleeve.
  - 5.2.8.2 Back of Shirt is to be no more than 20cm long, 10cm high and no lower than 7cm from where the shirt and collar join.
  - 5.2.8.3 Trouser pockets is to be no more than 10cm long, 10cm high and no lower than 10cm from the top of the trousers.
- 5.2.9 **Helmets** – In line with Cricket Australia, Cricket Victoria and our direct governing body, the VMCU, the NMCA strongly recommends the wearing of British Standard 7928-2013 compliant helmets when batting. However, wearing of British Standard 7928-2013 compliant helmets will be compulsory when wicket keeping up to the stumps, regardless of the bowling style and when fielding in close to the batter (7 metres from the batter's crease).

## **5.3 DISPUTES/PROTESTS ARISING FROM A MATCH**

- 5.3.1 All Disputes/Protests must be lodged on the nominated results web site within the time frame set out in Women's Playing By-Law 5.6.1 and notify the Association's General Manager or Operation Manager who will investigate the dispute. Any such occurrence will be investigated by the General Manager, which will determine a fine and/or loss of points. In the event of loss of points, the opposition team shall be credited with points as determined by the General Manager.
- 5.3.2 The General Manager shall furnish the club against whom the protest is lodged, with a copy.
- 5.3.3 In the event of a match won on dispute/protest, the successful team shall be credited with points as determined by the General Manager.
- 5.3.4 In the event of a dispute/protest in the scores, the Umpire(s) or Club officials, shall impound the scorebooks and forward them to the General Manager on the evening of the days play.  
**PLEASE NOTE: Umpires must not indicate to either team their opinion with regards to the result of the match.**
- 5.3.5 Appeals to the General Manager decision must be received by the General Manager, within 48 hours of the decision.
- 5.3.6 The appeal must be in writing, contain new evidence and lodged with the appropriate fee, as per the Penalties/Fines Schedule.
- 5.3.7 This fee shall be refunded if the decision is in favour of the appellant or if such appeal is not considered frivolous.



## **5.4 GROUNDS/PITCHES**

- 5.4.1 All matches shall be played on an association approved wicket covering.
- 5.4.2 Umpires shall be the sole judges of grounds and wickets and shall take control at least 30 minutes prior to the commencement of the match.
- 5.4.3 Grounds and pitches, including the marking of the popping crease with white paint, must be properly prepared for each day's play by the home team, to the satisfaction of the umpire(s). Crease markings (including wide ball guides) are found in Appendix A.
- 5.4.4 Boundary markings:-
- 5.4.4.1 The home team shall provide adequate and appropriate markers to ensure that the boundary does not exceed 50 metres from a line taken from centre stump to the boundary at each end. This will leave a straight boundary to both sides of the wicket from a line of the centre stump at one end to the centre stump at the other end.
- 5.4.4.2 Clubs whose grounds have fixed boundaries must apply Women's Playing By-Law 5.4.4.1 regardless of the distance of the fixed boundary fence is from the wicket.
- 5.4.5 The home team shall when requested by the umpire, provide sufficient clean sawdust and a broom for the use of bowlers or batters. Umpire(s) must report any breach, and the home team shall be fined as per the Penalties/Fines Schedule. Square leg umpires are not to hold brooms (or any materials) during play.
- 5.4.6 Any Club reported to the General Manager with synthetic covering in such a state of disrepair to be considered dangerous, shall be notified by the General Manager to have that synthetic covering repaired or replaced prior to their next home match.

## **5.5 MATCH POINTS**

### 5.5.1

Drawn Match	3 Points
First innings win one-day game, 20/20 game	6 points.
Tie on first innings	3 points each.
Scheduled Bye in Fixture – regardless of other match results	6 points

- 5.5.2 In the event of a walkover, points scored shall be the maximum for that round in that grade.
- 5.5.3 In the event of no play taking place in a match due to bad/hot weather or unfit grounds not attributed to either team, the result of such match shall be a draw, and each team shall receive 3 points.
- 5.5.4 In the event of a match won on dispute or protest, the successful team shall be credited with points as determined by the General Manager.
- 5.5.5
- 5.5.5.1 The four competing teams that have obtained the highest number of match points, or where teams have equal match points, the highest percentage, in their grade, at the completion of the home-and-away series of matches shall compete in the semi-final round of matches.
- 5.5.5.2 Should two or more competing teams have equal points and percentage at the completion of the home-and-away series, their position on the ladder shall be determined on the result of the home-and-away match between the two clubs during the season. In the event that this does not resolve the situation, the matter shall be decided by the Board.
- 5.5.6 In the event of a tie or draw in the final series, the win shall be awarded to the highest ranked team.
- 5.5.7 Premierships shall be awarded to one club per grade per season.

## **5.6 MATCH RESULTS**

- 5.6.1 Score Service – Home teams must enter the progress results of all matches, on the Association's nominated results Web Site at the end of each days play. For all Matches played on Saturday or Sunday, no later than 7:00 pm at the end of each days play.
- 5.6.2 Match Reports (Player Statistics) - Both home and away teams are responsible for input on to the Associations nominated results Web Site, their full team as listed on the official team sheet and their team's statistics of the game no later than 9:00 p.m. on the Monday following the completion of the match. For Matches completed on the Monday, then scores must be inputted by 9:00 pm on the Tuesday following the completion of the match. Once the game has been locked by the Operations Manager, it will not be reopened.
- 5.6.3 Paperwork from Match – Captains of teams shall list their players, using block letters, on official forms supplied by the Association. The listed players' full names should be EXACTLY the same as the full name that has been registered on the current Association nominated web site. Captains are to ensure that the abbreviation JNR is placed beside the junior players' name. The association at any time may call upon the production of these team sheets for verification purposes. Any failure to produce team sheets will result in penalties and or possible loss of match points.
- 5.6.4 Umpires Report – Must be completed electronically on the Associations nominated results website by each Captain individually by no later than 9:00 p.m. on the Monday following the completion of the match.
- 5.6.5 Any Club not adhering to these Regulations shall incur a penalty/fine as per the Penalties/Fines Schedule.
- 5.6.6 Clubs repeatedly not submitting these reports shall be dealt with by the General Manager.

## **5.7 NO BALL AND WIDE CALL**

- 5.7.1 A ball that lands to the side of the pitch shall be called a “No Ball”.
- 5.7.2 A ball that veers off the pitch and the batter does not have reasonable opportunity to score shall be called a “Wide”.
- 5.7.3 A full toss above the waist of a batter (in her normal batting stance) shall be called a “No Ball” by either umpire.
- 5.7.4 A ball that bounces over the batter’s shoulders (in his normal batting stance) shall be called a “No Ball” by either umpire.
- 5.7.5 A ball that bounces more than twice is a “No Ball”.

**Please Note:** Deliveries pitching off the pitch are No Balls (not wides), which is important because:

From a **no ball**, batters can be out Hit the Ball Twice, Run Out, Handled the Ball or Obstructing the Field.

From a **wide**, batters can be out Hit Wicket, Stumped, Run Out, Handled the Ball or Obstructing the Field.

## **5.8 SCHEDULED MATCH TIMES**

- 5.8.1 Play shall start and end at the scheduled times, as set out in the By-laws. Failure to complete the scheduled overs within the time allowed shall result in a fine according to the Penalties/Fines Schedule.
- 5.8.2 If play does not start at the scheduled time, due to the lack of material, i.e. stumps, bails, mats, balls or less than 7 players, the offending team shall be fined as per the Penalties/Fines Schedule. The scheduled start time may be amended due to weather conditions.
- 5.8.3 A team, unable to commence the match 15 minutes after the scheduled start time, shall lose the match. The offending team shall pay both teams’ umpires’ fees for that day’s play.

## **5.9 SCOREBOOKS / SCORERS**

- 5.9.1 Each Club shall use Association approved scorebooks.
- 5.9.2 Scorers in all grades must be sixteen (16) years of age or over.
- 5.9.3 Each Clubs score books shall be signed by the Umpire(s)/Captain(s), if no official umpire(s), at the conclusion of each days play.
- 5.9.5 Home Clubs shall supply and operate a score board which shall be updated at the end of every over by the batting side.

## **5.10 SUSPENSIONS, CITINGS AND REPORTS**

### **Player Behaviour – Offences and Penalties**

Clubs are advised to read the Match Review Panel documentation. This document clearly states the procedures for the reporting of Players or officials. Graded offences, suspension/citing penalties and probation are also contained in this documentation. The document can be found at [www.nmca.com.au](http://www.nmca.com.au).

## **5.11 TEAM SHEETS**

- 5.11.1 Registered players as declared on the team sheet are the only eligible players to play in the match, and any departure from this means loss of points.

All players must be 14 years of age or older to participate in the Women’s Cricket Competition.

Any team wishing to play a younger player, must seek permit from the NMCA. Permits will be given upon the discretion of the NMCA Women’s Cricket Manager.

Only team sheets from contested matches will be recognised by the Association. Clubs will not be able to submit team sheets for Scheduled Byes, Walkovers, and Completely Abandoned Games (i.e. where no play starts).
- 5.11.2 Captains of teams shall, on official forms supplied by the Association, list their players, including correct registered names, initials and printed in block letters, and ensure that the abbreviation JNR is placed beside the junior’s player’s name. The listed players’ full names should be EXACTLY the same as the full name that has been registered on the current Association nominated web site. All named players shall sign against their name on the team sheet.
- 5.11.3 Team sheets to be endorsed by both Captains and Umpires(s) (where appointed).
  - 5.11.3.1 Teams in all grades shall exchange team sheets prior to the start time on the first day. Team sheets (the oppositions and own copy) are to be stored in safe keeping for a period of twelve months. The Association at any time may call upon the production of these team sheets for verification purposes. Any failure to produce team sheets will result in penalties and or possible loss of match points.
  - 5.11.3.2 Once Clubs have confirmed the match on the Association’s nominated results web site, both teams accept the opposition team list is correct. If there are any discrepancies with the opposition’s nominated team (missing names, names of players who did not actively play, players playing under fictitious names), Clubs’ are required to “Dispute” the game on the nominated results web site within the time frame set out in Women’s Playing By Laws 5.6.1 and notify the Association’s General Manager or Operation Manager who will investigate the dispute. Any such occurrence will be investigated by the General Manager, who will determine a fine and/or loss off points. In the event of loss off points, the opposition team shall be awarded the maximum points from the grade in that particular round. There will be no investigation of such incidents if Clubs do not lodge a dispute notice in the required time frame.

## **5.12 WALKOVERS**

The General Manager shall be notified by the Club giving a walkover (by 9pm Thursday prior to a game).

The General Manager shall also inform the Club receiving the walkover.

## **5.13 WEATHER CONDITIONS**

### **5.13.1 Adverse Weather:**

In the event of active thunderstorm activity in the immediate vicinity of the playing area, all play is to cease **immediately**, and all players, umpires and officials are to find safe shelter without delay.

### **5.13.2 Extreme Weather:**

If, 24 hours prior to the commencement of scheduled play, the forecast temperature by the bureau of meteorology is 36 degrees Celsius or above, or for rain that may make the ground's unplayable, the General Manager, Women's Manager and Senior Sub-Committee shall meet/discuss 24 hours prior to the scheduled days play, or, in extreme, circumstances anytime in the week leading up to the day and make a decision on the merits of playing, amending or abandoning senior women's matches for the day.

The decision to abandon or amend play can be made before the day of play if the General Manager, Women's Manager and Senior Sub-Committee feel that preceding extreme weather or an extreme forecast could put our association members at risk.

Such factors as relative humidity, pollution levels, wind, expected change in weather during the course of the days play and ground conditions shall be taken into account when determining the safety of association players, umpires, scorers, officials and spectators.

Advice may also be sought from third parties in making this decision.

During all Seasons, the General Manager, Women's Manager and Senior Sub-Committee may decide to amend the Start Time of Matches from 9:00am to an earlier time. A decision must be made by 7:30pm on the day prior to scheduled play and shall be conveyed to all clubs by 8:00pm.

During the Summer Season of 30 Over One Day Matches, the General Manager, Women's Manager and Senior Sub-Committee may decide to amend the playing length of the games to 20 Over Matches. A decision must be made by 7:30am and shall be conveyed to all clubs by 8:00am.

A decision must be made by 7:30am on the scheduled day of play, and shall be conveyed to all clubs by 8:00am ONLY if the decision is to abandon the days play. If the decision is to abandon play, this means all matches shall be abandoned.

If there is no abandonment of play and the weather reaches 36 degrees at the Viewbank weather station after the commencement of play, the General Manager shall notify all Clubs that play shall cease immediately for a period of 20 minutes.

If this stoppage is within 20 minutes of the scheduled morning tea break, then the morning tea break shall be taken.

The General Manager, shall monitor the weather and take into consideration of any forecast conditions that could affect the recommencement of play, (cool change, cloud coverage, humidity levels, wind strength and direction etc.).

If, after the 20 minute break and in the General Manager's opinion, the weather conditions are not likely to abate, then he shall contact all Clubs to inform them that play will be abandoned for the remainder of the day.

If, after the 20 minute break and in the General Manager opinion, the weather conditions could change to allow play, then he shall contact all Clubs to inform them that play can recommence.

If play is allowed to recommence, actions which may assist in safe play include;

**5.13.2.1** Extra drink breaks (i.e. every 40 minutes and as needed)

**5.13.2.2** An extension to the tea break of up to ten (10) minutes, and

**5.13.2.3** An extension to the change of innings breaks of up to five (5) minutes.

**5.13.2.4** Umpires are advised to extend the scheduled time of completion to allow for these extra breaks.

## 5.14 WOMEN'S COMPETITION – 20/20 Match

Scheduled Times:	Start:	Stumps	Overs	No Game	Tea Break
All Grades	9.00 a.m.	12.15 p.m.	20/20	10	10.30 a.m.

### 5.14.1 Timing:-

If the innings of the team batting first has not been previously completed, it shall be compulsorily closed at the end of the scheduled overs (20), at which time a 15-minute break shall be taken. It is envisaged along with the umpires (if appointed), that the two (2) competing clubs shall ensure that the over rate is maintained such that the scheduled overs are bowled within the scheduled time. If the overs are not bowled within the prescribed time, clubs shall be fined according to the Penalties/Fines schedule.

### 5.14.2 Innings interrupted by weather conditions or late start:-

**5.14.2.1** If the match commences late or time is lost during the innings of the side batting first the overs shall be reduced from 20 by one (1) over for each seven minutes of lost time.

**5.14.2.2** For the team batting first, if the total time lost exceeds 40 minutes and the innings is not previously completed, then it shall be compulsorily closed on completion of 10 overs. If 10 overs have not been bowled to the side batting first (given the innings is not previously completed) by 11.45 pm then play shall be abandoned. The match is declared a draw.

**5.14.2.3** Ten (10) overs is the minimum number of overs to constitute a game (i.e. the "no game" overs).

**5.14.2.4** If a 20/20 match has not started by 10.30 am then play will be abandoned. The match is declared a draw.

### 5.14.3 First Innings Compulsory Closure:-

The side batting second shall be entitled to bat only for the same number of balls bowled to the first side.

### 5.14.4 First Innings Not Compulsorily Closed:-

The side batting second shall be entitled to bat only twenty (20) overs. However, if lost time reduced the overs entitlement for the side batting first, then the side batting second shall be entitled to bat only for the same reduced number of balls.

### 5.14.5 Cessation of Play:-

Play shall continue until the side batting second has received entitlement under clauses 5.14.3 and 5.14.4. Play shall cease before this if any of the following apply:

**5.14.5.1** Play is abandoned due to bad weather.

**5.14.5.2** Play has been delayed or interrupted for more than thirty (30) minutes by bad weather during the innings of the side batting second and the entitled overs have not been bowled by 12.15 pm, then play shall cease at the completion of the over in progress at 12.15 pm.

**5.14.5.3** Play shall not resume after any interruption due to bad weather any time after 12.15 pm.

**5.14.6** Failure to comply with the finish of play at the scheduled time shall result in penalties, as per Penalties/Fines Schedule.

**5.14.7** A fielding team shall have no more than 5 fieldsmen on the leg side and no more than 2 fieldsmen behind the popping crease on the leg side at any time. Any breach of this rule shall result in the call of "No Ball".

**5.14.8** No over may be longer than 8 balls, including no balls/wides.

**5.14.8** The responsibility of completing the required number of overs on time rests with both teams.

**5.14.9** A bowler shall be restricted to a maximum of one fifth (20=4) of the scheduled overs in an innings.

**5.14.10** Crease markings, including wide ball guidelines, for this form of the game are found in Appendix A at the end of the By-laws.

**5.14.11** A batter must retire immediately when they have reached 35 runs and may return to the crease when all other players listed on the team sheet have batted. Should more than one player retire, the retired players must return in order of retirement.

**5.14.12** Each team must have a minimum of 8 players before the match can commence. A maximum of 11 fielders may be on the field at any time.

In Division Two, if a team has less than eleven players on the field, then the other team is restricted to use the same number of fielders. If this occurs, players can be substituted at any time and can bowl without any time restrictions. Teams can bat up to 11 batters regardless of opposition team numbers.

**5.14.12.1** The opposition team may offer the team with less players "substitute fielders" and if these are taken, both teams play with the number of fielders who take the field for the team who has accepted the substitutes.

If these substitute fielders are not accepted by the team with less than 11 players, the team with 11 players is permitted to field with the full 11.

**5.14.12.2** Teams are permitted to list up to 13 players on their Team Sheet. This must include a designated bowler and a designated batter.

**5.14.13** In Division One, the batting team must supply the square leg umpire. In Division Two and below, the fielding team must supply the square leg umpire. This allows for assistance in field placements and bowling changes.

**5.14.14** Overs are to be bowled in 5 over blocks.

## 5.15 WOMEN'S COMPETITION – One Day Match

Scheduled Times:	Start:	Stumps	Overs	No Game	Tea Break
All Grades	9.00 a.m.	1.20 p.m.	30/30	15	11.00 a.m.

### 5.15.1 Timing:-

If the innings of the team batting first has not been previously completed, it shall be compulsorily closed at the end of the scheduled overs (30), at which time a 20-minute break shall be taken. It is envisaged along with the umpires (if appointed), that the two (2) competing clubs shall ensure that the over rate is maintained such that the scheduled overs are bowled within the scheduled time. If the overs are not bowled within the prescribed time, clubs shall be fined according to the Penalties/Fines schedule.

### 5.15.2 Innings interrupted by weather conditions or late start:-

**5.15.2.1** If the match commences late or time is lost during the innings of the side batting first the overs shall be reduced from 30 by one (1) over for each seven minutes of lost time.

**5.15.2.2** For the team batting first, if the total time lost exceeds 50 minutes and the innings is not previously completed, then it shall be compulsorily closed on completion of 15 overs. If 15 overs have not been bowled to the side batting first (given the innings is not previously completed) by 11.50 am, then play shall be abandoned. The match is declared a draw.

**5.15.2.3** Fifteen (15) overs is the minimum number of overs to constitute a game (i.e. the “no game” overs).

**5.15.2.4** If a 30/30 match has not started by 11.00 am then play will be abandoned. The match is declared a draw.

### 5.15.3 First Innings Compulsory Closure:-

The side batting second shall be entitled to bat only for the same number of balls bowled to the first side.

### 5.15.4 First Innings Not Compulsorily Closed:-

The side batting second shall be entitled to bat only thirty (30) overs. However, if lost time reduced the overs entitlement for the side batting first, then the side batting second shall be entitled to bat only for the same reduced number of balls.

### 5.15.5 Cessation of Play:-

Play shall continue until the side batting second has received entitlement under clauses 5.15.3 and 5.15.4. Play shall cease before this if any of the following apply:

**5.15.5.1** Play is abandoned due to bad weather.

**5.15.5.2** Play has been delayed or interrupted for more than thirty (30) minutes by bad weather during the innings of the side batting second and the entitled overs have not been bowled by 1.30pm, then play shall cease at the completion of the over in progress at 1.30 pm.

**5.15.5.3** Play shall not resume after any interruption due to bad weather any time after 1.30 pm.

**5.15.6** Failure to comply with the finish of play at the scheduled time shall result in penalties, as per Penalties/Fines Schedule.

**5.15.7** A fielding team shall have no more than 5 fieldsmen on the leg side and no more than 2 fieldsmen behind the popping crease on the leg side at any time. Any breach of this rule shall result in the call of "No Ball".

**5.15.8** No over may be longer than 8 balls, including no balls/wides.

**5.15.8** The responsibility of completing the required number of overs on time rests with both teams.

**5.15.9** A bowler shall be restricted to a maximum of one fifth (30=6) of the scheduled overs in an innings.

**5.15.10** Crease markings, including wide ball guidelines, for this form of the game are found in Appendix A at the end of the By-laws.

**5.15.11** A batter must retire immediately when they have reached 50 runs and may return to the crease when all other players listed on the team sheet have batted. Should more than one player retire, the retired players must return in order of retirement.

**5.15.12** Each team must have a minimum of 8 players before the match can commence. A maximum of 11 fielders may be on the field at any time.

In Division Two, if a team has less than eleven players on the field, then the other team is restricted to use the same number of fielders. If this occurs, players can be substituted at any time and can bowl without any time restrictions. Teams can bat up to 11 batters regardless of opposition team numbers.

**5.15.12.1** The opposition team may offer the team with less players “substitute fielders” and if these are taken, both teams play with the number of fielders who take the field for the team who has accepted the substitutes.

If these substitute fielders are not accepted by the team with less than 11 players, the team with 11 players is permitted to field with the full 11.

**5.15.12.2** Teams are permitted to list up to 13 players on their Team Sheet. This must include a designated bowler and a designated batsman.

**5.15.13** In Division One, the batting team must supply the square leg umpire. In Division Two and below, the fielding team must supply the square leg umpire. This allows for assistance in field placements and bowling changes.

(Going to keep it as the fielding team for all matches in the T10 – just because we may have a mixture of Div 1 and Div 2 teams playing each other – and if it's the completely new teams, they're going to need a fielding square leg!)

**5.15.14** Overs are to be bowled in 5 over blocks.

## **5.16 WOMEN'S COMPETITION – 10/10 Match**

### **5.16.1 Timing:-**

If the innings of the team batting first has not been previously completed, it shall be compulsorily closed at the end of the scheduled overs (10), at which time a 15-minute break shall be taken. It is envisaged along with the umpires (if appointed), that the two (2) competing clubs shall ensure that the over rate is maintained such that the scheduled overs are bowled within the scheduled time. If the overs are not bowled within the prescribed time, clubs shall be fined according to the Penalties/Fines schedule.

### **5.16.2 Innings interrupted by weather conditions or late start:-**

**5.16.2.1** If the match commences late or time is lost during the innings of the side batting first the overs shall be reduced from 10 by one (1) over for each seven minutes of lost time.

**5.16.2.2** For the team batting first, if the total time lost exceeds 20 minutes and the innings is not previously completed, then it shall be compulsorily closed on completion of 5 overs. If 5 overs have not been bowled to the side batting first (given the innings is not previously completed) by 22 minutes from the scheduled start of play then play shall be abandoned. The match is declared a draw.

**5.16.2.3** Five (5) overs is the minimum number of overs to constitute a game (i.e. the “no game” overs).

**5.16.2.4** If a 10/10 match has not started within 60 minutes for the scheduled starting time then play will be abandoned. The match is declared a draw.

### **5.16.3 First Innings Compulsory Closure:-**

The side batting second shall be entitled to bat only for the same number of balls bowled to the first side.

### **5.16.4 First Innings Not Compulsorily Closed:-**

The side batting second shall be entitled to bat only ten (10) overs. However, if lost time reduced the overs entitlement for the side batting first, then the side batting second shall be entitled to bat only for the same reduced number of balls.

### **5.16.5 Cessation of Play:-**

Play shall continue until the side batting second has received entitlement under clauses 5.16.3 and 5.16.4. Play shall cease before this if any of the following apply:

**5.16.5.1** Play is abandoned due to bad weather.

**5.16.5.2** Play has been delayed or interrupted for more than thirty (30) minutes by bad weather during the innings of the side batting second and the entitled overs have not been bowled by expiry of 45 minutes from the start of the innings, then play shall cease at the completion of the over in progress at the 45<sup>th</sup> minute.

**5.16.5.3** Play shall not resume after any interruption due to bad weather any time after 45 minutes from the commencement of the innings.

**5.16.6** Failure to comply with the finish of play at the scheduled time shall result in penalties, as per Penalties/Fines Schedule.

**5.16.7** A fielding team shall have no more than 5 fieldsmen on the leg side and no more than 2 fieldsmen behind the popping crease on the leg side at any time. Any breach of this rule shall result in the call of "No Ball".

**5.16.8** No over may be longer than 6 balls, including no balls/wides.

**5.16.8.1** If a no ball or wide is bowled the batter takes a shot off the tee. He tee will be kept behind the wicket and the wicketkeeper of the bowling team is responsible for placing this on the pitch immediately after the Umpire has signalled a wide/no ball.

**5.16.8.2** The responsibility of completing the required number of overs on time rests with both teams.

**5.16.8** The responsibility of completing the required number of overs on time rests with both teams.

**5.16.9** A bowler shall be restricted to a maximum of one fifth (10=2) of the scheduled overs in an innings.

**5.16.10** Crease markings, including wide ball guidelines, for this form of the game are found in Appendix A at the end of the By-laws.

**5.16.11** A batter must retire immediately when they have reached 25 runs and may return to the crease when all other players listed on the team sheet have batted. Should more than one player retire, the retired players must return in order of retirement.

**5.16.12** Each team must have a minimum of 8 players before the match can commence. A maximum of 11 fielders may be on the field at any time.

In Division Two, if a team has less than eleven players on the field, then the other team is restricted to use the same number of fielders. If this occurs, players can be substituted at any time and can bowl without any time restrictions. Teams can bat up to 11 batters regardless of opposition team numbers.

**5.16.12.1** The opposition team may offer the team with less players “substitute fielders” and if these are taken, both teams play with the number of fielders who take the field for the team who has accepted the substitutes.

If these substitute fielders are not accepted by the team with less than 11 players, the team with 11 players is permitted to field with the full 11.

**5.16.12.2** Teams are permitted to list up to 13 players on their Team Sheet. This must include a designated bowler and a designated batsman.

**5.16.13** The fielding team must supply the square leg umpire. This allows for assistance in field placements and bowling changes.

**5.16.14** Overs are to be bowled in 5 over blocks.

**5.16.15** The playing field shall be roped off at 40 metres and games will be played on a standard pitch.

## **5.17 WOMEN'S COMPETITION – FINAL SERIES QUALIFICATION REQUIREMENTS**

**5.17.1** Players must have played one third of the Clubs contested home and away matches during the home and away season to qualify for the semi-final and final matches. Contested games means a game that has commenced by the bowling of one legal delivery. For qualification purposes this means that byes, walkovers received and completely abandoned matches (where no play has commenced) will have adjustments made to the qualification quotient. Effectuated Clubs will be informed by the Operations Manager as close to the end of the season as possible to assist Clubs with player qualifications. Teams that give walkovers will not have any adjustments to their qualification quotient nor can they submit a team sheet for the match forfeited.

<b>Completed Games</b>	<b>Qualification Games</b>
4 - 6	2
1 - 3	1

**5.17.2** Finals System: The format of all finals series will be advised to participating Clubs at the start of each programmed series.

**5.17.3** Open selection allows a player qualified in a higher grade to play in the finals series of a lower grade for which he has not qualified under Senior Playing By-Law 5.17.1

## **5.18 WOMEN'S COMPETITION – FINALS SERIES**

**5.18.1** All Finals shall be played under the home and away match conditions.

**5.18.2** Players must have played a minimum of matches in the Designated Competition, to be eligible to play in the Final Series. The number of matches is determined by the table in Women's Players By-Laws Sub-Clause 5.17.1.

**5.18.3** Shields shall be awarded after the final for each grade. Shields must be returned to the General Manager within seven (7) days after the final.

**5.18.3.1** Clubs may borrow shields for functions, but must notify the General Manager in writing or electronically.

**5.18.3.2** Clubs failing to return the shield within scheduled time shall be fined according to the Penalties/Fines schedule.

## **5.19 WOMEN'S COMPETITION – MARQUEE PLAYERS**

**5.19.1** Each team will be permitted one (1) marquee player for the duration of the season/tournament. Each team must have the same marquee player for the duration of the season/tournament. A marquee player who has or is currently playing in the WCC Competition or has played in an equivalent competition in Victoria/Australia.

**5.19.2** The marquee player must be nominated [wccp.nmca@gmail.com](mailto:wccp.nmca@gmail.com) prior to the commencement of each season. The marquee player must be approved by the NMCA before they can commence playing.

**5.19.3** For Clubs with two teams, a marquee player must be nominated for each team and play with that team for the duration of the fixture season. Marquee players are permitted to swap teams in between Spring and Summer seasons.

**5.19.4** Players (non-marquee) are permitted to play up to three (3) games in a higher level competition across the duration of the current season.

If this three game threshold is exceeded, players will become eligible to be considered under the "Marquee Player" rule.

Clubs are required to advise the NMCA Women's Cricket Manager of the name, Club and date at which NMCA players will be participating in a higher grade. Players will be given a permit from the NMCA to do so.

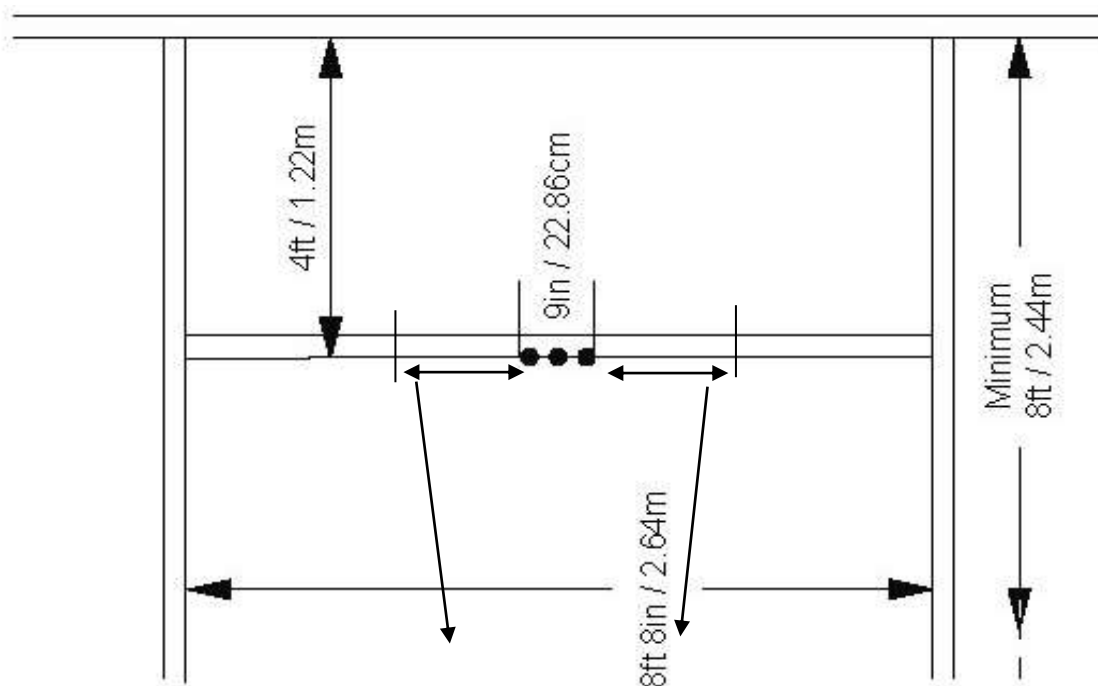
## **APPENDIX A - NMCA COMPETITION GROUNDS**

### **Competition Grounds**

LGA	Venue	Address	Reference	Club
Banyule	Chelsworth Park East	Irvine Road, East Ivanhoe	31-G10	Old Ivanhoe
Banyule	Chelsworth Park West	Irvine Road, East Ivanhoe	31-G10	Fairfield / Old Ivanhoe
Banyule	Ford Park North	Davidson Street, Bellfield	31-D4	Bellfield
Banyule	Ford Park South	Davidson Street, Bellfield	31-D4	Ivanhoe Mavericks
Banyule	Heidelberg Park	Beverly Road, Heidelberg	32-B4	Heidelberg West
Banyule	Olympic Park South	Catalina Street, West Heidelberg	19-D11	Olympic Colts
Banyule	Seddon Reserve	Sparkford Street, West Ivanhoe	31-C7	West Ivanhoe
Darebin	C.H. Sullivan Park East	Blake Street, Reservoir	19-D9	Fiji Victorian
Darebin	C.H. Sullivan Park West	Blake Street, Reservoir	19-D9	Fiji Victorian/Camrea
Darebin	C.T. Barling Park East	Plenty Road, Reservoir	19-C7	Cobras
Darebin	C.T. Barling Park West	Plenty Road, Reservoir	19-C7	Cobras/Northern Socials
Darebin	H.L.T. Oulton Park North	Bell Street & Albert Street, Preston	31-A2	Preston Baseballers
Darebin	H.L.T. Oulton Park South	Bell Street & Albert Street, Preston	31-A2	Preston Baseballers
Darebin	H.P. Zwar Park	Jessie Street, Preston	18-E12	West Preston
Darebin	Hayes Park East	Flinders Street, Thornbury	30-K4	Holy Trinity
Darebin	Hayes Park West	Flinders Street, Thornbury	30-K4	Holy Trinity
Darebin	I.W. Dole Reserve	Dole Street & Cheddar Road, Reservoir	18-K1	Sagarmatha
Darebin	J.C. Donath Reserve #1	Harmer Street, Keon Park	18-J1	Keon Park
Darebin	J.C. Donath Reserve #3	Harmer Street, Keon Park	18-J1	Rosebank/West Preston
Darebin	J.C. Donath Reserve #4	Harmer Street, Keon Park	18-J1	Darebin Northern Riders
Darebin	J.C. Donath Reserve #5	Harmer Street, Keon Park	18-J1	Reservoir Mayston
Darebin	J.C. Donath Reserve #6	Harmer Street, Keon Park	18-J1	Donath
Darebin	J.C. Donath Reserve #7	Harmer Street, Keon Park	18-J1	Donath/Cameron
Darebin	J.E. Moore Park North	Gilbert Road, Reservoir	18-E5	Preston YCW District
Darebin	J.E. Moore Park South	Henty Street, Reservoir	18-E6	Cameron
Darebin	John Hall Reserve	Dunne Street, Kingsbury	19-B4	Camrea
Darebin	L.E. Cotchin Reserve	Massey Ave & Hughes Parade, Reservoir	8-D12	Rosebank
Darebin	McDonnell Park East	Clifton Street, Northcote	30-J8	Dennis
Darebin	McDonnell Park West	Clifton Street, Northcote	30-J8	Dennis
Darebin	Preston City Oval	Cramer Street, Preston	18-F12	Preston Bullants (Juniors)
Darebin	T.W. Blake Park #1	Murray Road & Gower Street, Preston	19-B12	Preston Footballers
Darebin	T.W. Blake Park #2	Murray Road & Gower Street, Preston	19-B12	Preston Himalayan/Preston Footballers
Darebin	W. Ruthven VC Reserve	Albert Street, Preston	19-A10	Northern Socials
Murrindindi	Kinglake Memorial Reserve	Extons Road, Kinglake Central, Kinglake	380-B2	Kinglake
Nillimbuk	Ryders Flat Reserve	Arthurs Creek Road, Arthurs Creek	393-C5	Strathewen
Whittlesea	Laurimar Park East	Painted Hills Road		Doreen
Whittlesea	Kelynack Reserve	Azalea Drive, Mill Park	10-C5	Rivergum
Whittlesea	Lalor Reserve	Sydney Crescent, Lalor	9-A3	Lalor Warriors
Whittlesea	Sycamore Reserve	Hawkes Drive, Mill Park	9-E4	Rivergum
Yarra	Fairfield Park	Yarra Bend Road, Fairfield	30-H12	Fairfield
Yarra	Ramsden Street Oval	Ramsden Street, Clifton Hill	30-H12	Clifton Hill

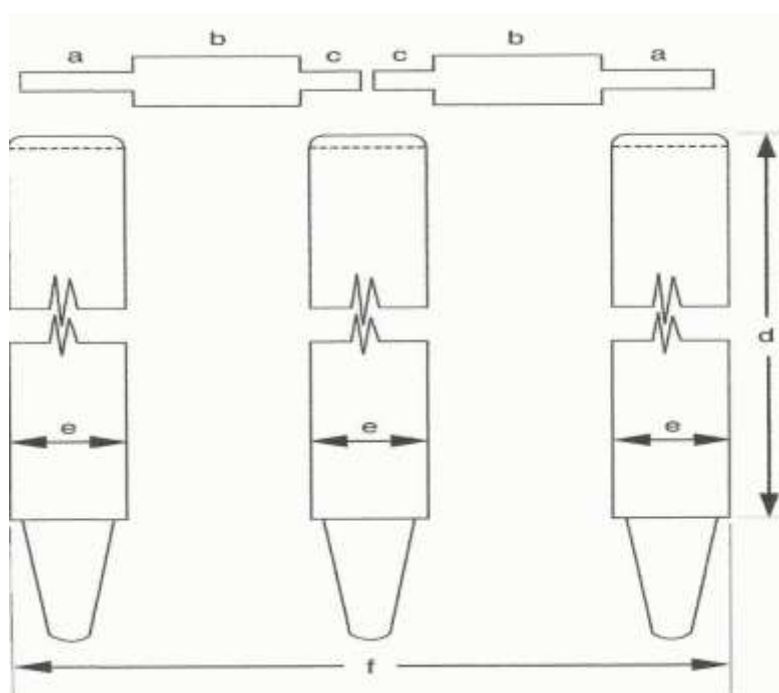


**APPENDIX B: CREASE MARKINGS (including Wide Ball Markings)**



18 in / 45.72cm  
Wide Ball Guidelines - From Outside Edge Of Stump To Inside Edge Of Line

**APPENDIX C: STUMP DIMENSIONS)**



- Balls:- For Senior Cricket – Overall 4.31 Inches/10.95 cm:  
 (a) 1.38 in/3.5 cm;  
 (b) 2.13 in/5.4 cm;  
 (c) 0.81 in/ 2.06 cm
- Stumps:- For Senior Cricket –  
 (d) Height 28 in/71.1 cm;  
 (e) Diameter: Maximum 1.5 in/3.81 cm; Minimum 1.38 in/3.5 cm
- Overall:- For Senior Cricket –  
 (f) Width 9in/2.86 cm